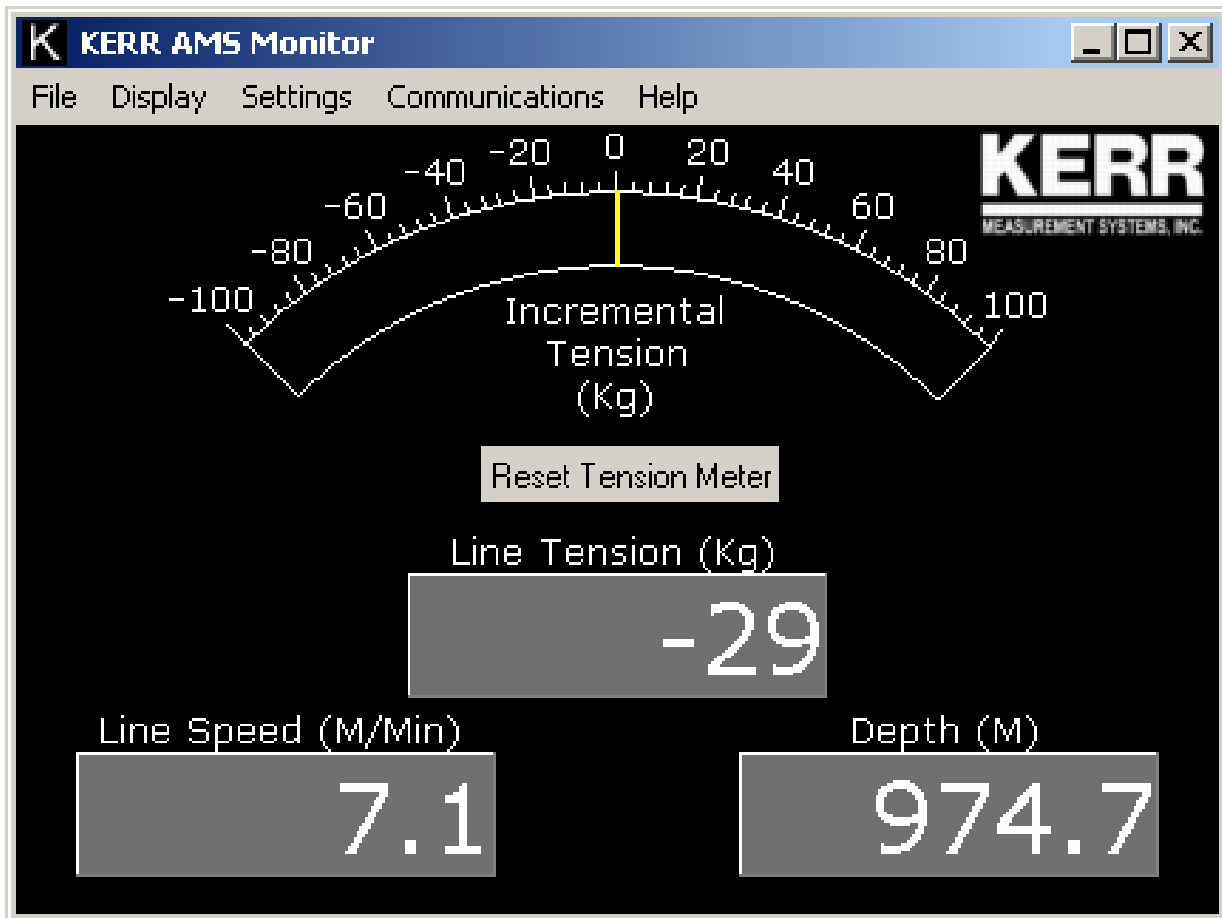


BENCHMARK WIRELINE PRODUCTS

AMS Monitor



Introduction.

The AMS monitor program is used to acquire real time data from BenchMark Wireline Products panels. It records depth , tension and speed with actual time not elapsed logging time.

This program can be used to acquire this data especially during perforating/explosive services when policy requires power to be shut down.

Communicating through COM1 port to the RS232 port data can be recorded in a text file format.

After some conversion the txt file data can read in WARRIOR logging software.

Software.

There is no big file for installation. Only one .exe file and it will open for you KERR AMS Monitor.

Connecting all correct cables you can see DTS. (Fig 1.1)

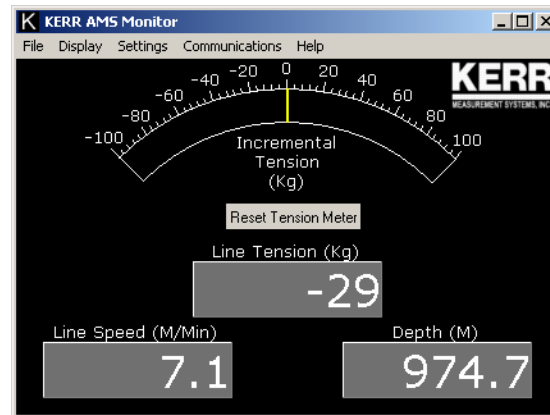
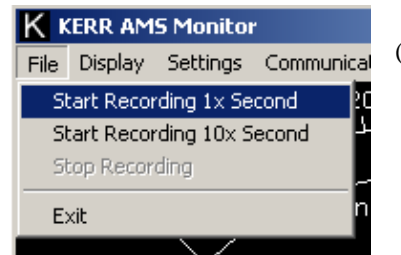


Fig . 1.1

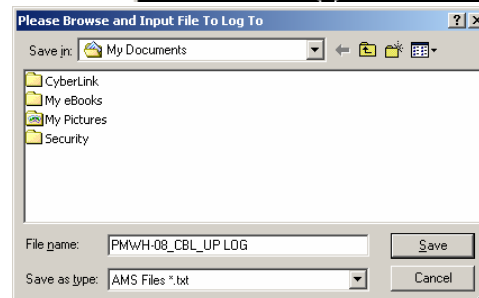
To start recording go to file and start recording You can select sampling rate 1 sample per foot or 10 samples per foot. Fig1.2)

Fig 1.2



You need give a direction to file save. It will be a text file you can save this file where ever you want there is no specified folder for this software. (Fig 1.3).

Fig 1.3



On your AMS monitor screen *Recording* will show up in red color same like when you are recording with your handy cam. (Fig 1.4)

Fig 1.4



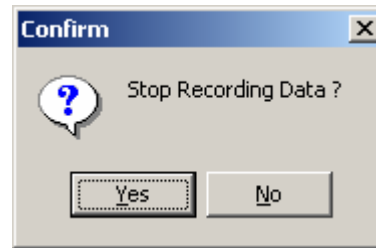
To stop recording, use the same file drop-down menu. (Fig 1.5)

Fig 1.5.



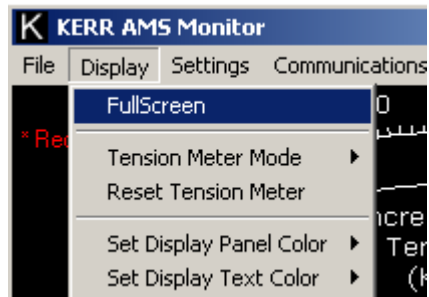
Software will confirm from you again. (Fig 1.6)

Fig 1.6

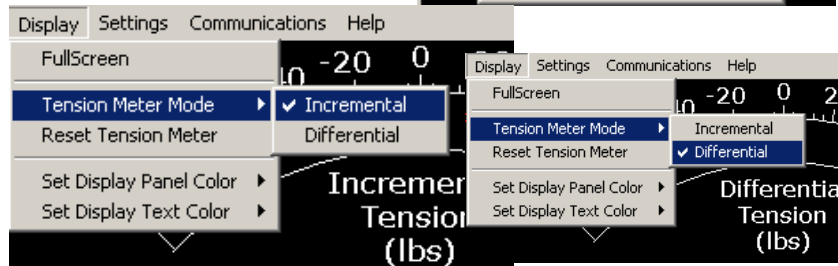


Software Options.

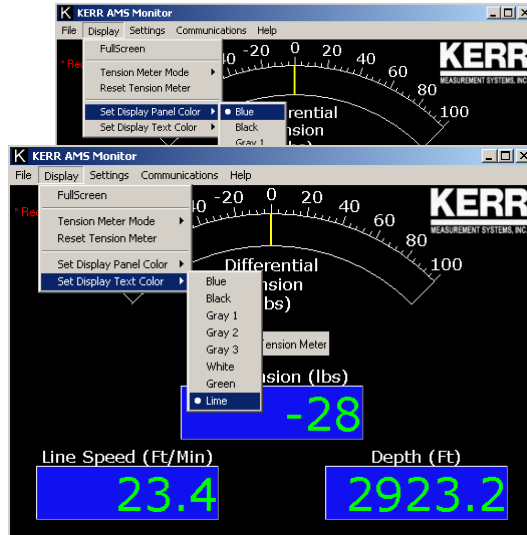
Full Screen : AMS Monitor window will cover your whole screen.



Tension Meter Mode: It will change tension meter to Incremental or Differential.

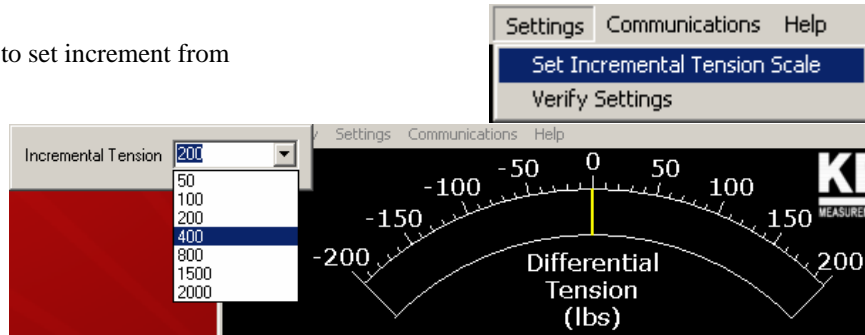


Can change back ground color of display digits .

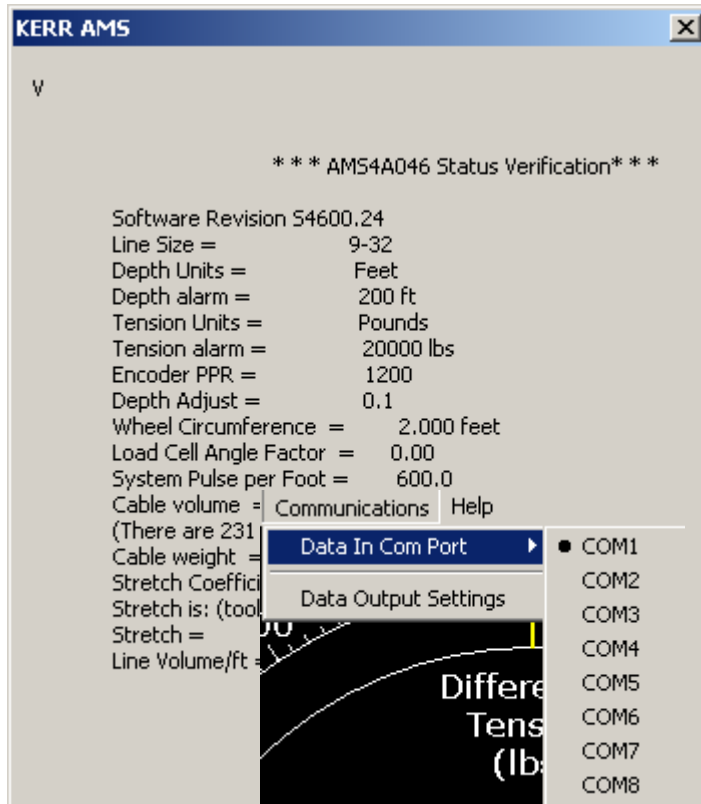
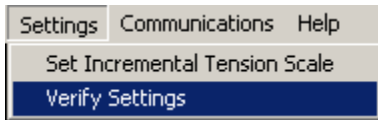


Can change color of display digits.

This option will allow you to set increment from 50 to 2000 Lbs.

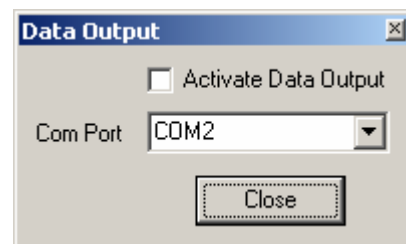
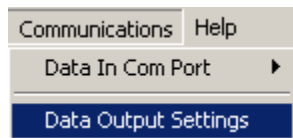


To verify all settings in KERR panel .

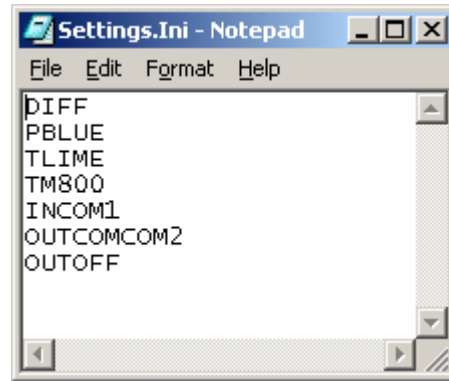


Data recording port or data in port .
 Mostly now we have only one COM1.

If your computer is using more than one COM port that you can direct the out of data to other source also i.e. some external hard disk or back up disk. (No need to Adjust this setting , do not check on Activate Data Out put.)



When you will start software first time and you will close than will generate one .ini file. Do not try to change any thing in this file.



it

Reading a text file

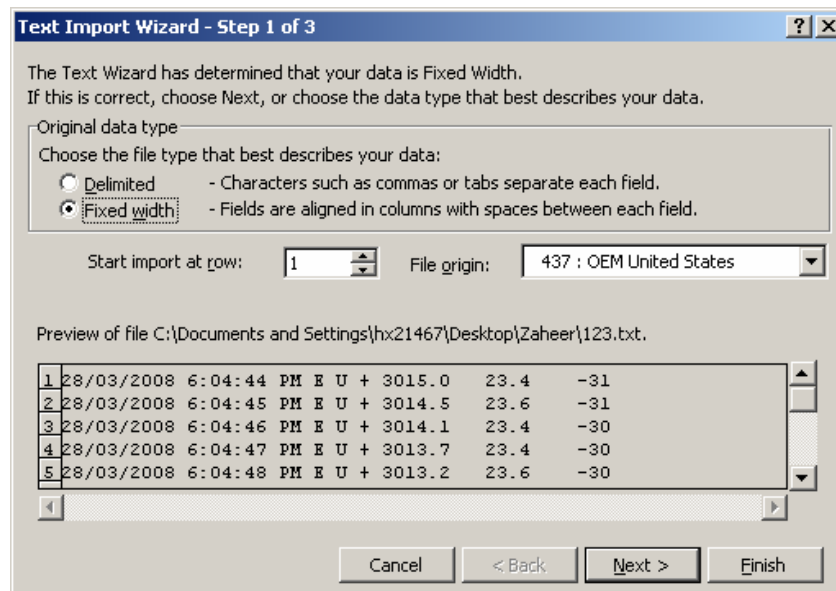
You can read file in notepad but you can not plot directly from notepad. To read a file in MS Excel.

Start (pull up menu) > Programs > Microsoft office > Microsoft Office Excell.

Open menu & open file (use only above method , do not right click and use option Open With).

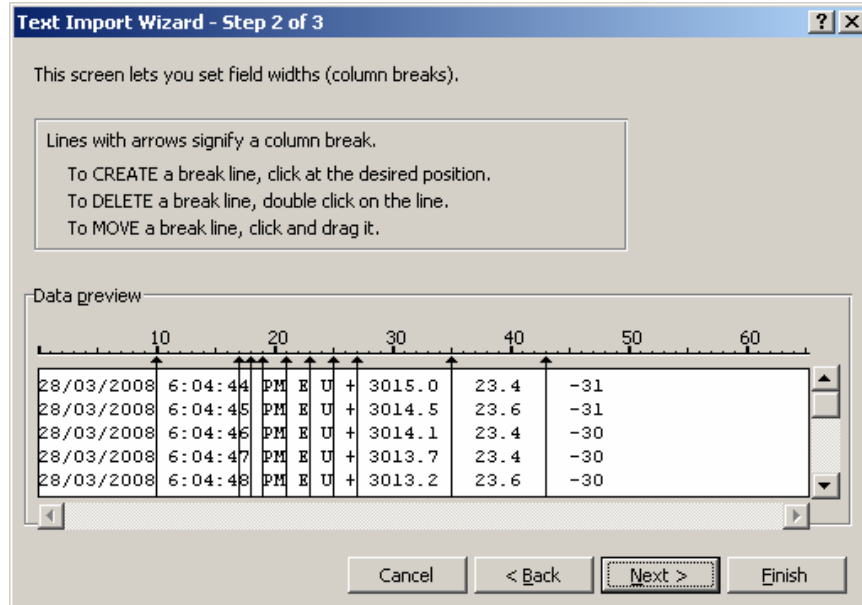
Select your file (txt) file that you recorded .

Select fix width and go for next.



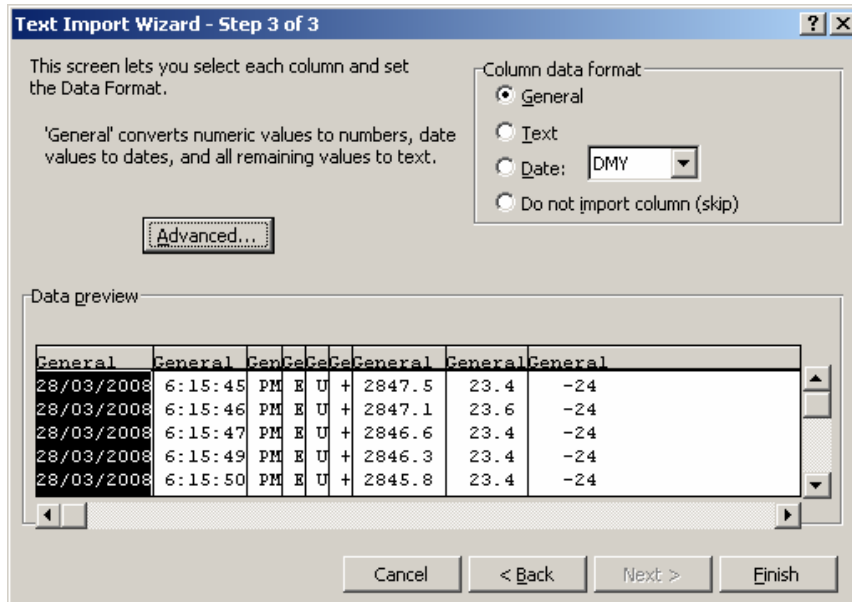
By clicking on arrow or at any point between the data you can enter a full column.

You can move your arrows but actually you are moving the break lines in excel. (excel column lines).



Keep open general for all
Click on finish

Now you have all of your data in each different column but if you right click on txt file and you open directly it will open all txt file columns merged in one excel column. So again, this is not recommended.



It is not easy to delete a column from txt file but when you open txt file in excel than you can delete any complete column .

28/03/2008	6:15:45	PM	E	U	+	2847.5	23.4	-24
28/03/2008	6:15:46	PM	E	U	+	2847.1	23.6	-24
28/03/2008	6:15:47	PM	E	U	+	2846.6	23.4	-24
28/03/2008	6:15:49	PM	E	U	+	2846.3	23.4	-24
28/03/2008	6:15:50	PM	E	U	+	2845.8	23.4	-24
28/03/2008	6:16:09	PM	E	U	+	2838.1	23.4	-24
28/03/2008	6:16:11	PM	E	U	+	2837.7	23.4	-24
28/03/2008	6:16:12	PM	E	U	+	2837.3	23.4	-24
28/03/2008	6:16:13	PM	E	U	+	2836.9	23.6	-24
28/03/2008	6:16:14	PM	E	U	+	2836.4	23.4	-24
28/03/2008	6:16:15	PM	E	U	+	2836.1	23.4	-24
28/03/2008	6:16:16	PM	E	U	+	2835.6	23.4	-24
28/03/2008	6:16:17	PM	E	U	+	2835.2	23.4	-24

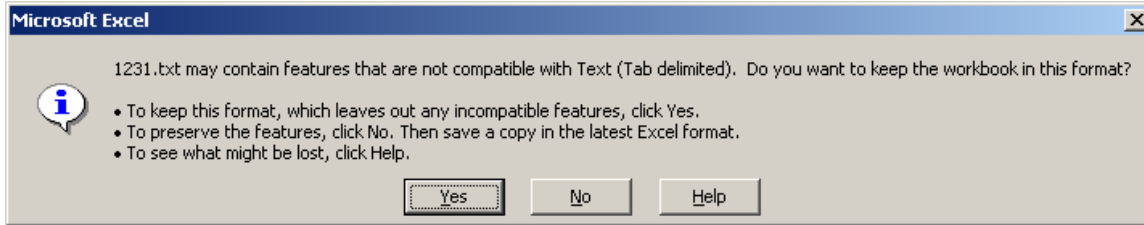
Above is the file opened by excel from txt file at 1 sample per second.
From left to right you have ,

Date
Time
PM/AM
Units English / Metric
Direction up or down
Up+ down -
Depth
Speed
Tension

Let's say to read depth tension and speed , you delete all other columns

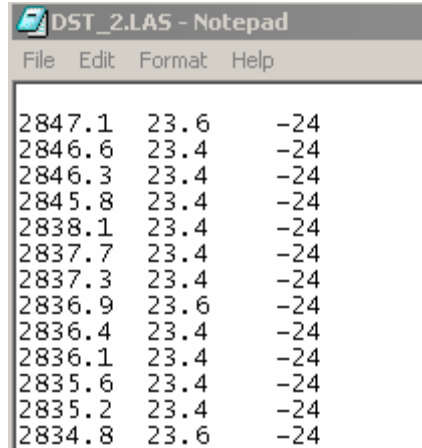
2847.5	23.4	-24
2847.1	23.6	-24
2846.6	23.4	-24
2846.3	23.4	-24
2845.8	23.4	-24
2838.1	23.4	-24
2837.7	23.4	-24
2837.3	23.4	-24
2836.9	23.6	-24
2836.4	23.4	-24

When you will try to save in this format a message will pop up



Say yes and save,

Open your txt file and you have data in the following format



Communication Cable:

You have to connect COM serial cable with following configuration

DB9 PIN OUT: 2 = TRANSMIT, 3 = RECEIVE, 5 = GROUND

One side is behind the KERR panel on RS232 serial port and other end to computer.
 You have to connect only with COM port , you can not use any other link .

Other options.

When reading your data in excel you can also plot a X-Y plot.